

# LAKE SANDS DISTRICT

*Pre - RT*

*the CRAWLIN' KINGSNAKE*

JUNE 2011

BOY SCOUT ROUNDTABLE NEWSLETTER

LSD BS RT

7 P.M.

9 JUNE 2011

N 30° 10.890 // W 085° 40.010

## “SHOOTING”

**Opening: Troop 321**

**Program Feature: T.317 Jeff Neitzke**

**Big George's Medical Moment!**

**Sing A Simple Song ! by T.317**

### **SITES 'N STUFF RELATED to THEME of the MONTH:**

Become an NRA Certified Instructor:

<http://www.nrahq.org/education/training/instructor.asp>

Shooting Sports Resources: [http://www.scoutingthenet.com/Shooting\\_Sports/](http://www.scoutingthenet.com/Shooting_Sports/)

Rifle Shooting Requirements and Resources:

<http://www.scouting.org/scoutsource/BoyScouts/AdvancementandAwards/MeritBadges/mb-RIFL.aspx>

NRA Gun Safety Rules: <http://www.nrahq.org/education/guide.asp>

10 Rules of Safe Gun Handling: <http://www.nssf.org/safety/basics/>

### **KG's NATURE BITES of the MONTH:**

**So Many Plants, So Little Time: Crow Poison, *Zigadenus densu*,**

[http://wildflowers.jdcc.edu/Crow\\_Poison.html](http://wildflowers.jdcc.edu/Crow_Poison.html)

<http://plants.usda.gov/java/profile?symbol=ZIDE>



CROW POISON

**Bugga da Month:** Eastern Coma, *Polygonia comma* <http://edis.ifas.ufl.edu/in817>

**Everybody's Heard About the Bird:** Whip-poor-will, *Caprimulgus vociferus*  
<http://www.allaboutbirds.org/guide/whip-poor-will/id>

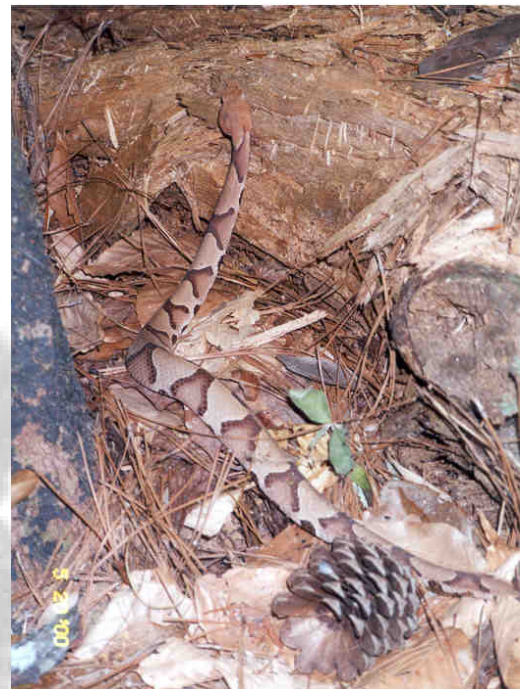
**Critter of the Month:** Southern Copperhead, *Agkistrodon contortrix*  
<http://www.flmnh.ufl.edu/herpetology/fl-guide/Agkistrodoncontortrix.htm>



**EASTERN COMA**



**Whip-poor-will**



**Copperhead (Torreya St. Pk.)**

**The Sky Tells a Story:** High up in the southern sky lies Saturn, just northwest of Spica, the brightest star in Virgo. The winter constellations are being swallowed up in the Sun's glare, but you might spot Sirius low in the SW as June begins. Sirius vanishes into the Sun's glare by mid-June, and this sets the period as "Dog Days", when Sirius lies lost in the Sun's glare.

The brightest star in the NW is Capella, distinctively yellow in color, in Auriga. Just south of it are the stellar twins, the Gemini, with Castor closer to Capella, and Pollux closer to the Little Dog Star, Procyon. By the end of June, all the winter stars, like Sirius, will have vanished behind the Sun.

The brightest star of the northern hemisphere, Vega, rises in the NE as twilight deepens. Twice as hot as our Sun, it appears blue-white, like most bright stars. Its constellation, tiny Lyra, looks like a parallogram just south of Vega, but was the harp of Orpheus in Greek legends.

**Plus the Usual** Handouts Gone Wild!! / RT Spirit Stick / Ticket Drawing / Closing

**Upcoming Events** visit <http://www.lakesandsdistrict.org>

- 1) College of Commissioner Science, Sat 27 Aug at Deane Bozeman School
- 2) LSD Fall Camporee, 11-13 Nov (Theme & Location TBD)
- 3) GCC Winter Camp, 27-30 Dec.
- 4) LSD 2012 Spring Camporee, 20-22 Apr 2012.

**Future Monthly RT Feature Themes:** If you'd like to Step Up and Become Famous as a LSD RT Theme Presenter, your support would be much appreciated!! Call KG at 234-4077 or email me at [kerry.gunn@navy.mil](mailto:kerry.gunn@navy.mil).

- 11 Aug = Hiking
- 8 Sept = Engineering (Carl Bennett & Doug Merkle)
- 13 Oct = High Adventure
- 10 Nov = Tracking
- 8 Dec = Hobbies (T.39 Mr. Ted)
- 12 Jan 2012 = Public Service
- 8 Feb = Cultural Diversity
- 8 Mar = Wildlife Mgmt
- 12 Apr = Camping
- 10 May = Emerg Prep
- 14 Jun = Health Care

See ya **Thursday Night 9 June !!!!** YIS, KG, your LSD BS RTC RT #69

**Roundtable Suggestion / Ideas**

Date: \_\_\_\_\_

Name: \_\_\_\_\_ Troop: \_\_\_\_\_

Position: \_\_\_\_\_ Phone: \_\_\_\_\_

E-mail: \_\_\_\_\_

Suggestion / Idea:

---



---



---



---

