

LAKE SANDS DISTRICT

Pre - RT

the *CRAWLIN' KINGSSNAKE*

January **2012**

BOY SCOUT ROUNDTABLE NEWSLETTER

LSD BS RT 7 P.M. 12 JAN 2012 N 30° 10.890 // W 085° 40.010

“PUBLIC SERVICE”

Opening: Troop 388

Program Feature: by T.302 SM Randy Segler

Big George's “Medical” Moment”!

Sing A Simple Song! by T.369

SITES 'N STUFF RELATED to THEME of the MONTH:

Patriot Games / American Government Quiz

<http://www.libs.uga.edu/media/collections/nixon/nixonquiz/amgovintro.htm>

You can find the plans for the Public Service Troop Program Feature in [Volume 3 of Troop Program Features](#) from BSA. The plans include four troop meeting plans and an outdoor program feature which includes a service project. The focus in this program feature is citizenship and service. Younger Boy Scouts can work on flag etiquette, flag ceremonies, and their rights and duties as US Citizens. Older Scouts could work on the [Citizenship in the Community](#), [Citizenship in the Nation](#), and [Citizenship in the World](#) merit badges. Scouts who already have those badges could expand their knowledge by working on [Public Health](#), [American Cultures](#), or [American Heritage](#) merit badges.

KG's NATURE BITES of the MONTH:

Wild Bird Unlimited Shop, <http://panamacity.wbu.com/>

So Many Plants, So Little Time: Sand Violet, *Viola affinis*,
<http://plants.usda.gov/java/profile?symbol=VIAF2>

Everybody's Heard About the Bird: Common Grackle, *Quiscalus quiscula*
http://www.allaboutbirds.org/guide/Common_grackle/id

Bugga da Month: Deer Tick, *Ixodes scapularis* <http://edis.ifas.ufl.edu/in300>

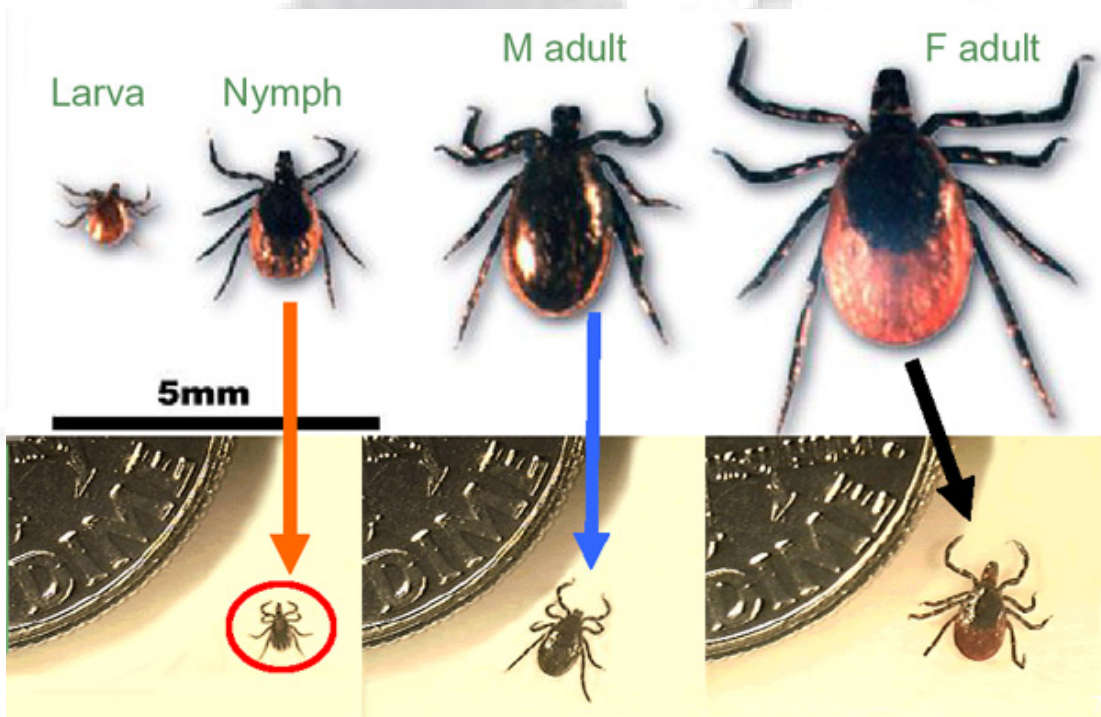
Critter of the Month: Hickory Horned Devil (of the Regal Moth), *Citheronia regalis* http://entnemdept.ufl.edu/creatures/bfly/regal_moth.htm



Sand Violet



Common Grackle



Deer Tick



Hickory Horned Devil



Regal Moth

The Sky Tells a Story:

Venus dominates the western evening sky for the first five months of 2012. She now appears as a small, gibbous disk, but will get larger and closer as she overtakes earth in the next months, to pass directly between us and the sun on the afternoon of June 5, 2012, a rare and historic Transit of Venus. At that moment, she is as close to earth as any planet can get. Mars is also getting closer, coming to opposition in Leo on March 3, 2012, which will be the closest he can get to us for the next two years. He is now rising about 10:15 PM as January begins, but will be coming up about 8:30 PM by month's end, and much closer and brighter by then as well. Jupiter is still well placed in the SW sky through March, and its four moons and their transits across his face a fine telescopic treat for all observers and star gazes. Saturn rises about 1 AM as January begins, and will reach opposition on April 15th this year. It will be close to the bright star Spica in Virgo all year.

Plus the Usual: Handouts Gone Wild!! / RT Spirit Stick / Ticket Drawing / Closing

Upcoming Events:

- 1) **LSD Banquet, Sat 7 Jan** at Northside Baptist Church.
- 2) **Green Bar Weekend at STSR, 27-29 Jan.**
- 3) **GC Council Banquet, Sat 4 Feb.**
- 4) **YNAW 24-26 Feb** at STSR.
- 5) **LSD Merit Badge University, Sat 7 April.**
- 6) **LSD 2012 Spring Camporee** at Redfish PT TABF, **20-22 Apr 2012**; plus BS IOLS training.

Future Monthly RT Feature Themes: If you'd like to Step Up and Become Famous as a LSD RT Theme Presenter, your support would be much appreciated!! Call KG at 234-4077 or email me at kerry.gunn@navy.mil.

8 Feb = Cultural Diversity (T.369 Joe & Mrs. Dippin)

8 Mar = Wildlife Mgmt (Jim Moyers, Wildlife Biologist)

12 Apr – Camping (???)

10 May – Emergency Prep (T.317)

14 Jun – Health Care

9 Aug – Safety

13 Sept – Nature

11 Oct – Business

8 Nov – First Aid

13 Dec – Winter Camping (?)

See ya Thursday Night 12 Jan !!!! YIS, KG, your LSD BS RTC RT #75

Roundtable Suggestion / Ideas

Date: _____

Name: _____

Position: _____

E-mail: _____

Suggestion / Idea: _____

