

# LAKE SANDS DISTRICT

*Pre - RT*

*the CRAWLIN' KINGSSNAKE*  
BOY SCOUT ROUNDTABLE NEWSLETTER

JUNE 2012

LSD BS RT 7 P.M. 14 JUNE 2012 N 30° 10.890 // W 085° 40.010

## “CANOEING”



**Opening: Troop 303**

**Program Feature:** by T.300 *ROB ADAMS*

**Big George's "Monthly Moment"!**

**Sing A Simple Song! by T.388**

### **SITES 'N STUFF RELATED to THEME of the MONTH:**

Canoeing Info <http://www.annologger.com/canoeing/basic-canoe-stroke-diagrams.php>

BSA Safety Afloat

<http://www.scouting.org/scoutsource/HealthandSafety/Aquatics/safety-afloat.aspx>

Note: "For Cub Scouts: Canoeing, kayaking, rowing, and rafting for Cub Scouts (including Webelos Scouts) are to be limited to council/district events on flat water ponds or controlled lake areas free of powerboats and sailboats. Prior to recreational canoeing and kayaking, Cub Scouts are to be instructed in basic handling skills and safety practices."

FL Paddling Trails (34 page PDF)

[http://www.dep.state.fl.us/gwt/PDF/FL\\_Paddling\\_Trails.pdf](http://www.dep.state.fl.us/gwt/PDF/FL_Paddling_Trails.pdf)

Econfina Creek Canoe Trail (2 page PDF)

<http://www.nfwmd.state.fl.us/lands/econfina/EconfinaCanoeBrochure.pdf>

Econfina Creek Guide (8 page PDF)

[http://www.dep.state.fl.us/gwt/guide/designated\\_paddle/Econfina\\_guide.pdf](http://www.dep.state.fl.us/gwt/guide/designated_paddle/Econfina_guide.pdf)

Econfina Creek The Big Picture (9 page PDF)

[http://www.nfwmd.state.fl.us/pubs/big\\_picture/Econfina\\_Creek.pdf](http://www.nfwmd.state.fl.us/pubs/big_picture/Econfina_Creek.pdf)

Wilderness Canoeing in the Okefenokee Swamp

<http://www.fws.gov/okefenokee/WildernessCanoeing.html>

Okefenokee Adventures <http://www.okefenokeeadventures.com/>

FL Designated Paddling Trails <http://www.dep.state.fl.us/gwt/guide/paddle.htm>

## **KG's NATURE BITES of the MONTH:**

Wild Bird Unlimited Shop, <http://panamacity.wbu.com/>

So Many Plants, So Little Time: **White Bird's-in-a-Nest**, *Macbridea alba*  
[http://www.fs.fed.us/wildflowers/rareplants/profiles/tep/macbridea\\_alba/index.shtml](http://www.fs.fed.us/wildflowers/rareplants/profiles/tep/macbridea_alba/index.shtml)

Everybody's Heard About the Bird: **Least Flycatcher**, *Empidonax minimus*  
[http://www.allaboutbirds.org/guide/least\\_flycatcher/id](http://www.allaboutbirds.org/guide/least_flycatcher/id)

Bugga da Month: **Squash Vine Borer**, *Melittia cucurbitae*  
<http://santarosa.ifas.ufl.edu/?p=310>

Critter of the Month: **Spadefoot Toad**, *Scaphiopus holbrooki*  
[http://www.wec.ufl.edu/extension/wildlife\\_info/frogstoads/scaphiopus\\_holbrooki\\_holbrooki.php](http://www.wec.ufl.edu/extension/wildlife_info/frogstoads/scaphiopus_holbrooki_holbrooki.php)  
and **Swamp Daddy**, *Halfmanus halfamazingei*



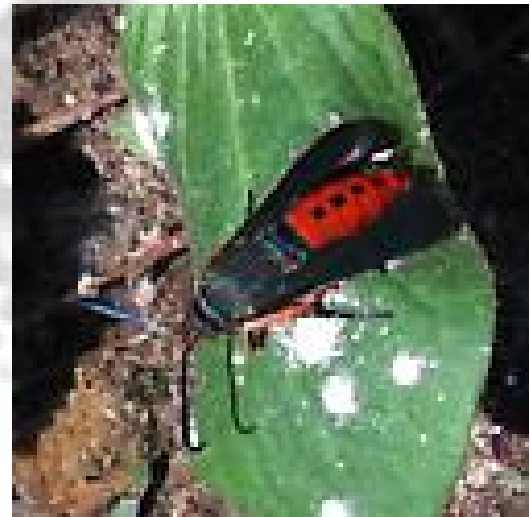
White Birds-in-a Nest



Least Flycatcher



Spadefoot Toad



Squash Vine Borer



Swamp Daddy, *Halfmanus halfamazingei*

**The Sky Tells a Story:** The big event for June 2012 was the transit of Venus in front of the sun on the afternoon of Tuesday, June 5th. This rare event will not occur again in our lifetimes; it will be 127 years before the alignments of Earth and Venus again cause Venus to appear to move across the visible disk of the sun.

High up in the southern sky is the most beautiful planet, Saturn, just northeast of Spica, the brightest star in Virgo.

The brightest star in the NW is Capella, distinctively yellow in color. Just south of it are the stellar twins, the Gemini, with Castor closer to Capella, and Pollux closer to the Little Dog Star, Procyon, in Canis minor. By the end of June, all the winter stars will have vanished. Overhead, the Big Dipper rides high. Good scouts know to take its leading pointers north to Polaris, the famed Pole Star.

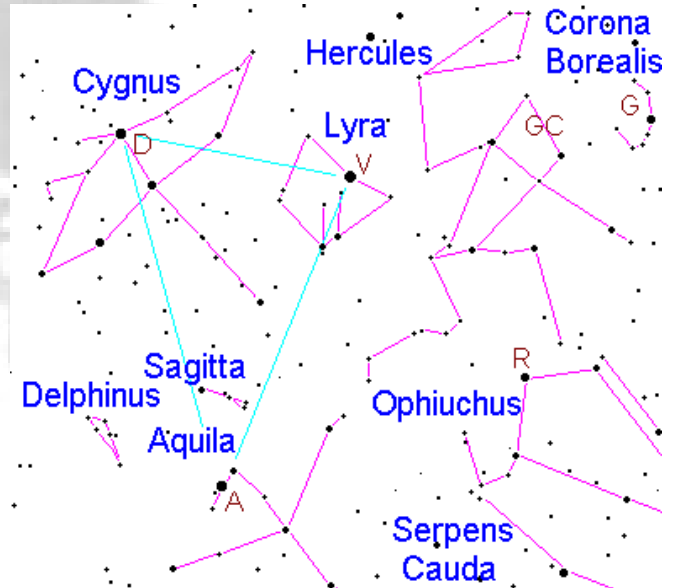
If you drop south from the bowl of the Big Dipper, Leo the Lion rides high. Taking the arc in the Dipper's handle, we "arc" SE to bright orange Arcturus, the brightest star of Spring, in the constellation Bootes, the Herdsman. Spike south to Spica, the hot blue star in Virgo, then curve to Corvus the Crow, a four sided grouping.

To the east, Hercules, the Dragon Slayer, is rising, just at the head of Draco, the Dragon. Below Hercules is Ophiuchus, the Serpent Handler.

The brightest star of the northern hemisphere, Vega rises in the NE as twilight deepens. Its constellation, tiny Lyra, looks like a parallelogram just south of Vega, but was the harp of Orpheus in Greek legends.



Ophiuchus, the Snake Handler



Summer Evenings, Spring Mornings

**Plus the Usual:** Handouts Gone Wild!! / RT Spirit Stick / Ticket Drawing / Closing

**Upcoming Events:**

- 1) LSD Cub Scout Day Camp, 18-22 June at the Fairgrounds.
- 2) STSR Summer Camp: 17-23 & 24-30 June, & 1-7 July.
- 3) 6<sup>th</sup> Annual College of Commissioner Science, Sat 25 Aug, Northside Baptist.
- 4) LSD Fall Camporee, 19-21 Oct.
- 5) LSD Boy Scout Shooting Sports Day, Sat 3 Nov.

**Future Monthly RT Feature Themes:** If you'd like to Step Up and Become Famous as a LSD RT Theme Presenter, your support would be much appreciated!! Call KG at 234-4077 or email me at [kerry.gunn@navy.mil](mailto:kerry.gunn@navy.mil). And reminder that all past "Crawlin Kingsnake" RT newsletters and other useful links can be found at [http://www.lakesandsdistrict.org/Boy\\_Scouts.php](http://www.lakesandsdistrict.org/Boy_Scouts.php) .

- 9 Aug – **FINANCE** (ECC Finance Committee)
- 13 Sept – **Nature** (KG, your LSD BS RTC)
- 11 Oct – **Safety** (T.82 Nate Weeks)
- 8 Nov – **First Aid**
- 13 Dec – **Winter Camping** (??)
- 10 Jan 2013 - **Citizenship**
- 14 Feb – **Physical Fitness**
- 14 Mar - **Forestry**
- 11 Apr - **Leadership**
- 9 May – **Special Cooking**
- 13 June - **Backpacking**

See ya **Thursday Night 14 June !!!!** YIS, KG, your LSD BS RTC RT #80

**Roundtable Suggestion / Ideas**

Date: \_\_\_\_\_  
Name: \_\_\_\_\_ Troop: \_\_\_\_\_  
Position: \_\_\_\_\_ Phone: \_\_\_\_\_  
E-mail: \_\_\_\_\_  
Suggestion / Idea: \_\_\_\_\_  
\_\_\_\_\_  
\_\_\_\_\_

