

# LAKE SANDS DISTRICT

Pre - RT

the *CRAWLIN' KINGSSNAKE*

Dec 2014

BOY SCOUT ROUNDTABLE NEWSLETTER

**LSD BS RT 7 P.M. 11 DEC 2014 3140 State Ave PC, LDS Church**

## “HOBBIES”



**Opening: Troop 350**

**Program Feature: HOBBIES (by the RT Crowd)**

**and Model RR by T.317 Jeff and Jake Neitzke**

**Big George's “Monthly Moment” !**

**Traveling Spirit Sticks – to be returned by T. 310 & T.345**

### **SITES 'N STUFF RELATED to THEME of the MONTH:**

Collections MB <http://www.usscouts.org/usscouts/mb/mb128.asp>

Coin Collecting MB <http://www.usscouts.org/usscouts/mb/mb035.asp>

Stamp Collecting MB <http://www.usscouts.org/usscouts/mb/mb108.asp>

Model Design & Building MB <http://www.usscouts.org/usscouts/mb/mb075.asp>

Railroading MB <http://www.usscouts.org/usscouts/mb/mb094.asp>

### **KG's NATURE BITES of the MONTH:**



**Wild Bird Unlimited Shop**, <http://panamacity.wbu.com/> Located at 2455 MLK Blvd, PC FL

**Question:** What do you call a bison that plays poker?

**Answer:** A bluffalo!

**Link to State Animals / Mammals:** [http://www.statesymbolsusa.org/Lists/state\\_mammals.html](http://www.statesymbolsusa.org/Lists/state_mammals.html)

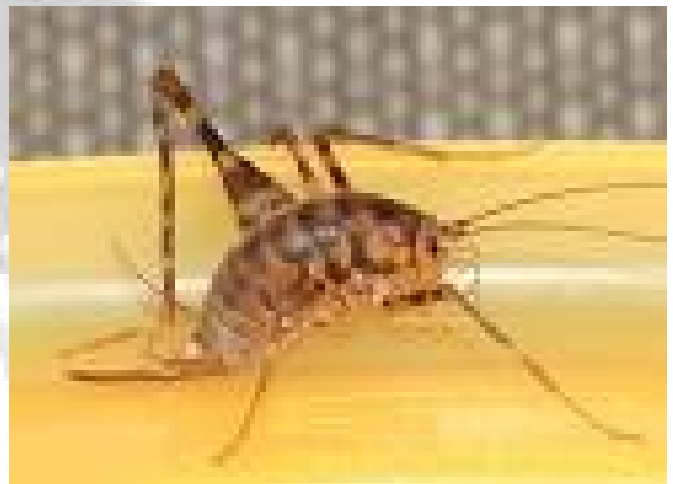
**So Many Plants, So Little Time:** Confederate Rose, *Hibiscus mutabilis*  
<http://nwdistrict.ifas.ufl.edu/hort/2014/09/09/confederate-rose-is-not-a-rose/>  
[http://santarosa.ifas.ufl.edu/lawn\\_garden/friday/confederaterose.pdf](http://santarosa.ifas.ufl.edu/lawn_garden/friday/confederaterose.pdf)



Confederate Rose

**Bugga da Month:** Camel Cricket,

[http://www.clemson.edu/cafls/departments/esps/factsheets/household\\_structural/camel\\_cricket\\_hs21.html](http://www.clemson.edu/cafls/departments/esps/factsheets/household_structural/camel_cricket_hs21.html)



Camel Cricket

**Critter of the Month:** Pine Woods Snake, *Rhadinaea flavilata*

<https://www.flmnh.ufl.edu/herpetology/fl-guide/rhadinaeaflavilata.htm>

<http://srelherp.uga.edu/snakes/rhafla.htm>



**Pine Woods Snake**

**Everybody's Heard About the Bird:** Black-bellied Whistling-Duck, *Dendrocygna autumnalis*

[http://www.allaboutbirds.org/guide/black-bellied\\_whistling-duck/id](http://www.allaboutbirds.org/guide/black-bellied_whistling-duck/id)

<http://birds.audubon.org/species/blawhi>



**Black-bellied Whistling-Duck**

## **The Sky Tells a Story: Sky Calendar -- December 2014**

- 2 **Moon near Uranus** (evening sky) at 0h UT. Mag. +5.8.
- 5 **Moon near the Pleiades** (evening sky) at 10h UT.
  - [The Pleiades](#) (Wikipedia)
- 6 **Moon near Aldebaran** (midnight sky) at 3h UT.
  - [Aldebaran](#) (Wikipedia)
- 6 **Full Moon** at 12:26 UT.
- 8 **Mercury at superior conjunction** with the Sun at 10h UT. The elusive planet passes into the evening sky.
  - [Superior & Inferior Conjunctions](#) (Wikipedia)
- 9 **Moon near Pollux** (morning sky) at 15h UT.
- 10 **Moon near Beehive Cluster** (morning sky) at 19h UT.
  - [Beehive Cluster](#) (Wikipedia)
  - [M44: The Beehive Cluster](#) (APOD)
- 12 **Moon near Jupiter** (117° from Sun, morning sky) at 1h UT. Mag. -2.3.
- 12 **Moon near Regulus** (morning sky) at 16h UT.
- 12 **Moon at apogee** (farthest from Earth) at 23h UT (distance 404,581 km; angular size 29.5').
- 14 **Geminid Meteor Shower** peaks at 12h UT. Major activity lasts almost 24 hours around peak time. Produces bright, medium-speed meteors at its peak (up to 80 meteors/hour). Most reliable meteor shower. Easy to observe (radiant shown on sky map). Best seen after midnight.
  - [Observing the Geminids](#) (Gary Kronk)
  - [Meteor Shower Calendar](#) (IMO)
- 14 **Last Quarter Moon** at 12:53 UT.
- 17 **Moon near Spica** (61° from Sun, morning sky) at 3h UT.
- 19 **Moon near Saturn** (28° from Sun, morning sky) at 21h UT. Mag. +0.5.
- 21 **December solstice** at 23:03 UT. The time when the Sun reaches the point farthest south of the celestial equator marking the start of winter in the Northern Hemisphere and summer in the Southern Hemisphere.
  - [December Solstice](#) (Wikipedia)
- 22 **New Moon** at 1:35 UT. Start of lunation 1138.
  - [Lunation Number](#) (Wikipedia)
- 23 **Moon near Venus** (14° from Sun) at 3h UT.
- 24 **Moon at perigee** (closest to Earth) at 17h UT (364,797 km; angular size 32.8').
- 25 **Moon near Mars** (evening sky) at 5h UT. Mag. +1.1.
- 28 **First Quarter Moon** at 18:32 UT.
- 29 **Moon near Uranus** (evening sky) at 5h UT. Mag. +5.8. Occultation visible from Alaska, USA.

**Plus the Usual: Handouts Gone Wild!! / RT Spirit Stick / Ticket Drawing / Closing**

### **Upcoming Events**

- 1) **LSD Merit Badge University, Sat. 6 Dec.** at FSU PC.
- 2) **NYLT 27 Dec - 1 Jan** at STSR.
- 3) **LSD Annual Scouter Banquet, Sat. 10 Jan.** at Forest Park United Methodist Ch.
- 4) **Scouting for Food, 24-31 Jan.**
- 5) **OA Call Out Ceremony, Sat 31 Jan** at St. Andrew's State Park.
- 6) **YNAW 6-8 Feb.**
- 7) **LSD Spring Camporee, 24-26 April.**

**Future Monthly RT Feature Themes: If you'd like to Step Up and Become Famous as a LSD RT Theme Presenter, your support would be much appreciated!! Call KG at 234-4077 or email me at [kerry.gunn@navy.mil](mailto:kerry.gunn@navy.mil).** And reminder that all past "Crawlin Kingsnake" RT newsletters and other useful links can be found at [http://www.lakesandsdistrict.org/Boy\\_Scouts.php](http://www.lakesandsdistrict.org/Boy_Scouts.php) .

**Jan 2015 – NO Roundtable - LSD Banquet Sat 10 Jan !!**

**12 Feb – Cultural Diversity**

**12 Mar – WL Management (T.310 Roger Shields)**

**9 Apr – Camping**

**14 May – Emergency Prep (T.311 Sherry Goldman)**

**See ya Thursday Night 11 Dec !!!! YIS, KG, your LSD BS RTC RT #106**

**Roundtable Suggestion / Ideas**

Date: \_\_\_\_\_

Name: \_\_\_\_\_

Troop: \_\_\_\_\_

Position: \_\_\_\_\_

Phone: \_\_\_\_\_

E-mail: \_\_\_\_\_

Suggestion / Idea: \_\_\_\_\_

\_\_\_\_\_

\_\_\_\_\_

