

LAKE SANDS DISTRICT

Pre - RT

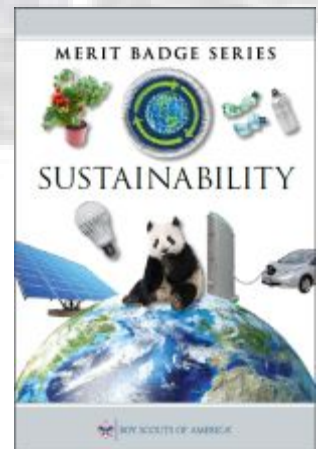
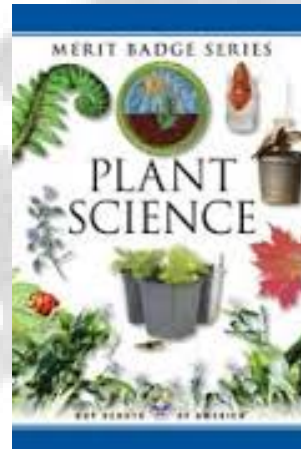
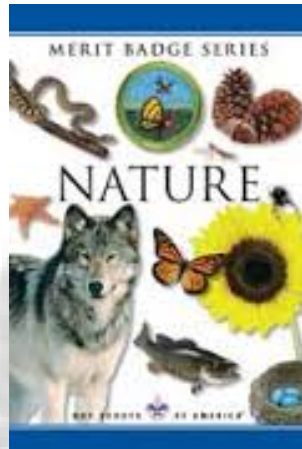
the *CRAWLIN' KINGSLAKE*

March **2014**

BOY SCOUT ROUNDTABLE NEWSLETTER

LSD BS RT 7 P.M. 13 MAR 2014 3140 State Ave DC, LDS Church

“ENVIRONMENT”



Opening: Troop 345

Program Feature: KG

Big George's "Monthly Moment"!

Traveling Spirit Sticks – to be returned by Bill VDT & T.356

SITES 'N STUFF RELATED to THEME of the MONTH:

Florida Native Plant Society (FNPS) Native Plant Definition and Other Terms:

<http://www.fnps.org/natives/definition>

A "Florida native plant" refers to a species occurring within the state boundaries prior to European contact, according to the best available scientific and historical documentation. Florida native plants include those species understood as indigenous, occurring in natural associations in habitats that existed prior to significant human impacts and alterations of the landscape."

Florida Exotic Pest Plant Council Invasive Plant Lists <http://www.fleppc.org/list/list.htm>

FL Invasive Plants <http://www.plantatlas.usf.edu/flip/>

FL Non-Native Wildlife <http://www.myfwc.com/nonnatives>

FL Invasive Species <http://www.invasivespeciesinfo.gov/unitedstates/fl.shtml>

FWC Imperiled Species <http://myfwc.com/wildlifehabitats/imperiled/>

FWC Gopher Tortoise Info <http://myfwc.com/wildlifehabitats/managed/gopher-tortoise/>

FWC Alligator Snapping Turtle

<http://myfwc.com/research/wildlife/amphibians-reptiles/alligator-snapper/>

Endangered Smoothbark St. John's-wort Brochure

http://www.baycountyaudubon.org/Smoothbark_Brochure.pdf

Beware of Invasive Cogon Grass

<http://www.freshfromflorida.com/Divisions-Offices/Florida-Forest-Service/Our-Forests/Forest-Health/Invasive-Non-native-Plants/Cogon-Grass>

Nature Rules at Pine Log State Forest

<http://www.visitflorida.com/en-us/articles/2013/freelance-articles-2013/pine-log-state-forest-tatman.html>

Great Florida Birding Trail <http://floridabirdingtrail.com/>

KG's NATURE BITES of the MONTH:



Q. What trees always have the flu?



A. The sick-a-more!!

Wild Bird Unlimited Shop, <http://panamacity.wbu.com/> Located at 2455 MLK Blvd, PC FL

So Many Plants, So Little Time: Water Tupelo, *Nyssa aquatica*

<http://plants.usda.gov/core/profile?symbol=nyaq2>



Water Tupelo

Critter of the Month: Cuban Treefrog (invasive), *Osteopilus septentrionalis*

http://www.wec.ufl.edu/extension/wildlife_info/frogstoads/osteopilus_septentrionalis.php
<http://edis.ifas.ufl.edu/uw259>

Bugga da Month: Southern Chinch Bug, *Blissus insularis* <http://edis.ifas.ufl.edu/lh036>



Southern Chinch Bug



Cuban Treefrog

Everybody's Heard About the Bird: American Goldfinch, *Spinus tristis*

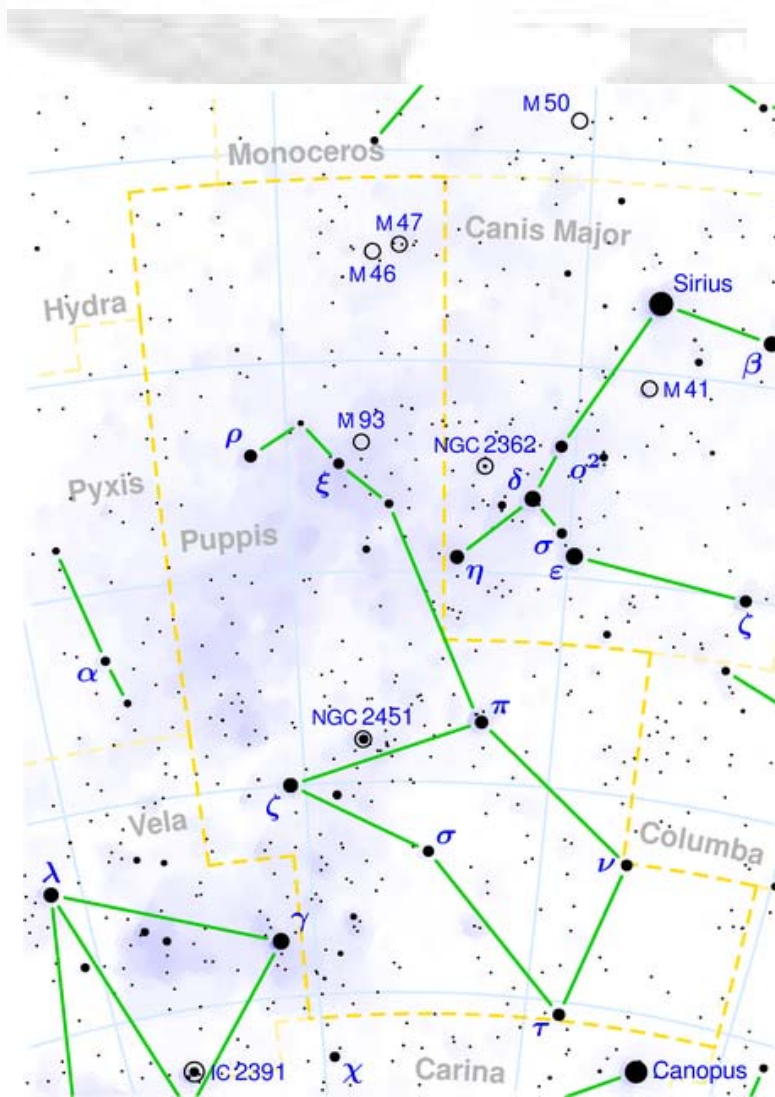
http://www.allaboutbirds.org/guide/american_goldfinch/id
<http://birds.audubon.org/birds/american-goldfinch>



American Goldfinch

The Sky Tells a Story: Constellation Puppis located just below Canis major (where Sirius, the brightest star in the N. Hemisphere Sirius lies)

<http://www.topastronomer.com/StarCharts/Constellations/Puppis.php>
<http://www.constellation-guide.com/constellation-list/puppis-constellation/>



Plus the Usual: Handouts Gone Wild!! / RT Spirit Stick / Ticket Drawing / Closing

Upcoming Events:

- 1) LSD Pinewood Derby, Sat 5 April.
- 2) LSD Spring Camporee, 25-27 April 2014.
- 3) STSR Summer Camp 3 weeks offered: 16-21 June, 22-28 June, 29 June -5 July.
- 4) Council-wide Fall Encampment, 24-26 Oct.

Future Monthly RT Feature Themes: If you'd like to Step Up and Become Famous as a LSD RT Theme Presenter, your support would be much appreciated!! Call KG at 234-4077 or email me at kerry.gunn@navy.mil. And reminder that all past "Crawlin Kingsnake" RT newsletters and other useful links can be found at http://www.lakesandsdistrict.org/Boy_Scouts.php.

- 10 April – Orienteering / Camporee Prep**
- 8 May – Mechanics (T.317 Jeff Neitzke)**
- 12 June - Hiking**
- 14 Aug – Shooting/Sports**
- 11 Sept – Engineering (T.310 Dale Cronwell)**
- 9 Oct – High Adventure**
- 13 Nov - Tracking**
- 11 Dec – LSD Scouter Banquet**

See ya **Thursday Night 13 March** !!!! **YIS, KG, your LSD BS RTC RT #98**

Roundtable Suggestion / Ideas

Date: _____

Name: _____

Troop: _____

Position: _____

Phone: _____

E-mail: _____

Suggestion / Idea: _____

