

LAKE SANDS DISTRICT

(not your usual walk in the park)

Pre - RT

the CRAWLIN' KINGSSNAKE

October **2015**

BOY SCOUT ROUNDTABLE NEWSLETTER

LSD BS RT 7 P.M. 8 Oct. 2015 3140 State Ave DC, LDS Church

“Special Needs Awareness”



Opening: Troop 350

Program Feature: T.317 Marsh Weber

Big George's "Monthly Moment"!

Traveling Spirit Sticks – to be returned by T. 347 & T.302

SITES 'N STUFF RELATED to THEME of the MONTH:

Disabilities Awareness – Serving Scouts with Disabilities

<http://www.scouting.org/disabilitiesawareness.aspx>

Scouting Magazine Special Needs Archives

<http://scoutingmagazine.org/category/boy-scouts/special-needs-scouting/>

BSA Advancement Flexibility Allowed

<http://www.scouting.org/Home/GuideToAdvancement/SpecialNeeds/AdvancementFlexibilityAllowed.aspx>

BSA Fact Sheet - Scouts with Disabilities and Special Needs <http://www.wswd.org/BSA-fact-sheet.htm>

A Leader's Guide to Disabilities Awareness MB

<http://scoutingmagazine.org/2014/02/leaders-guide-disabilities-awareness-merit-badge/>

Working with Scouts with Disabilities <http://www.wswd.org/>

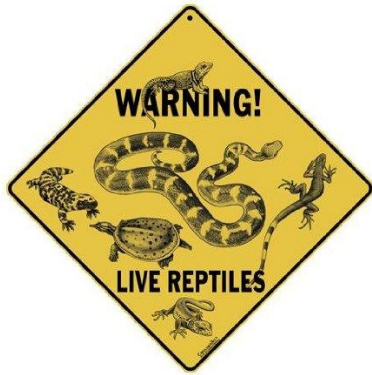
Tips on Camping for Those with Disabilities
<http://www.nmeda.com/tips-on-camping-for-those-with-disabilities/>

Camping for Disabled People: Advice Guide
<http://www.smart-camping-guide.com/camping-for-disabled.html>

Helping Your Special Needs Child (Hints) <http://www.ldonline.org/article/220/>

Special Needs Scouting Resources <http://scoutmastercg.com/special-needs-scouting-resources/>

KG's NATURE BITES of the MONTH:



Question: What kind of songs do planets sing?

Answer: Neptunes!

Question: Why do watermelons have fancy weddings?

Answer: Because they cantaloupe!

So Many Plants, So Little Time: **Red Buckeye**, *Aesculus pavia*

<http://edis.ifas.ufl.edu/st064>

<http://hort.ifas.ufl.edu/woody/Pages/aespav/aespav.shtml>

http://www.floridata.com/ref/A/aesc_pav.cfm

<http://plants.usda.gov/core/profile?symbol=AEPA>



Red Buckeye

Bug of the Month: Wedge-Shaped Beetles (suggested common name), *Ripiphorus* spp.

Ripiphoridae are a family of unusual parasitic beetles that are thought to be related to tumbling flower beetles (Coleoptera: Mordellidae) and blister beetles (Coleoptera: Meloidae).

<http://edis.ifas.ufl.edu/in1069>



Adult specimens of the two genera of Ripiphoridae. A) *Macrosiagon* Hentz, and B) *Ripiphorus* Bosc.

Critter of the Month: Lionfish, *Pterois volitans*

http://www.dep.state.fl.us/coastal/news/articles/2010/1002_Lionfish.htm

<http://myfwc.com/wildlifehabitats/nonnatives/marine-species/lionfish/>

<http://myfwc.com/wildlifehabitats/nonnatives/marine-species/lionfish/faqs/>



Lionfish

Everybody's Heard About the Bird: Song Sparrow, *Melospiza melodia*
http://www.allaboutbirds.org/guide/Song_Sparrow/id
<http://www.audubon.org/field-guide/bird/song-sparrow>



Song Sparrow

The Sky Tells a Story: My Very Educated Mother Just Showed Us Nine Planets!



The Solar System

Florida Public Boat Ramp Finder <https://public.myfwc.com/LE/boatramp/public/CountyMap.aspx>

Garden of Eden Hiking Trail <http://floridahikes.com/gardenofeden>

Plus the Usual: Handouts Gone Wild!! / RT Spirit Stick / Ticket Drawing / Closing

Upcoming Events

- 1) **LSD BS Fall "Scouting with a Twist" Camporee, 23-25 Oct**, Sims "Quail Run" 5245 Porter Pond Rd, Chipely (same location as LSD 2015 Spring Camporee).
- 2) **Veteran's Day Parade, Wed. 11 Nov.**
- 3) **LSD MBU, tentatively Sat 14 Nov.**
- 4) **Humane Society Service Day, Sat 5 Dec, 9AM - Noon.**
- 5) **LSD Annual Scouter Banquet, Sat 9 Jan.**
- 6) **Scouting for Food Bag Drop-off Sat 23 Jan & Food Bag Pickup Sat 30 Jan.**
- 7) **LSD Spring "UNPLUGGED" Camporee, 22-24 April 2016.**

Future Monthly RT Feature Themes: If you'd like to Step Up and Become Famous as a LSD RT Theme Presenter, your support would be much appreciated!! Call KG at 234-4077 or email me at kerry.gunn@navy.mil. And reminder that all past "Crawlin Kingsnake" RT newsletters and other useful links can be found at http://www.lakesandsdistrict.org/Boy_Scouts.php .

- 12 Nov – Archery (T.347 Bill Van Der Tulip)**
- 10 Dec –**
- 14 Jan 2016 – Sales Refresher**
- 11 Feb –**
- 10 Mar –**
- 14 April –**
- 12 May –**
- No RT in June**

OTHER RT THEMES – Please Take Your Pick!! Geocaching, Fitness & Nutrition, Sustainability, Nature & Environment, Cooking, Caving, Games, Science, Wilderness Survival, Technology, Project Planning, Paddle Sports, Outdoor Ethics, and Mentoring, etc.

See ya Thursday Night 8 October !!!! YIS, KG, your LSD BS RTC RT #114

Roundtable Suggestion / Ideas

Date: _____

Name: _____ Troop: _____

Position: _____ Phone: _____

E-mail: _____

Suggestion / Idea: _____

