

# LAKE SANDS DISTRICT

(not your usual walk in the park)

*Pre - RT*

*the CRAWLIN' KINGSLAKE*

*August* **2015**

**BOY SCOUT ROUNDTABLE NEWSLETTER**

**LSD BS RT 7 P.M. 13 Aug. 2015 3140 State Ave DC, LDS Church**

## “Project COPE”

Challenging Outdoor Personal Experience



**Opening: Troop 317**

**Program Feature: T.706 Chris Doppell**

**Big George's "Monthly Moment"!**

**Traveling Spirit Sticks – to be returned by T. 303 & T.310**

**SITES 'N STUFF RELATED to THEME of the MONTH:**

**BSA COPE & CLIMBING** <http://www.scouting.org/Home/OutdoorProgram/COPE.aspx>

**What is COPE?** <http://scoutmaster.org/usscouts/boyscouts/cope.asp>

**Challenging Outdoor Personal Experience Project COPE** is a series of inter-related events that challenge on an individual and group level. Events are divided into four categories: initiative games, trust events, low elements and high elements. Project COPE has **7 objectives: Teamwork, Self Confidence, Trust, Leadership, Communication, Decision-Making, and Problem-Solving.**

**COPE Courses:** High and Low Challenge Rope Courses – Design, Construction, Training, Facilitation, Management, and Inspection Services <http://www.copecourse.com/>

## **KE's NATURE BITES of the MONTH:**



**Question:** What happens to a frog's car when it breaks down?

**Answer:** It gets toad away!

**Question:** What did the bird say after its cage fell apart?

**Answer:** Cheap! Cheap!

**So Many Plants, So Little Time:** **Lyre-leaf Sage**, *Salvia lyrata*

<http://plants.ifas.ufl.edu/node/394>

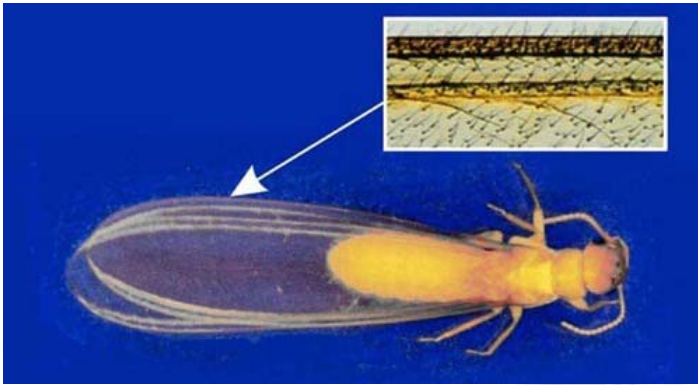
[http://www.floridata.com/ref/S/salv\\_lyr.cfm](http://www.floridata.com/ref/S/salv_lyr.cfm)

<http://plants.usda.gov/core/profile?symbol=saly2>



**Lyre-leaf Sage**

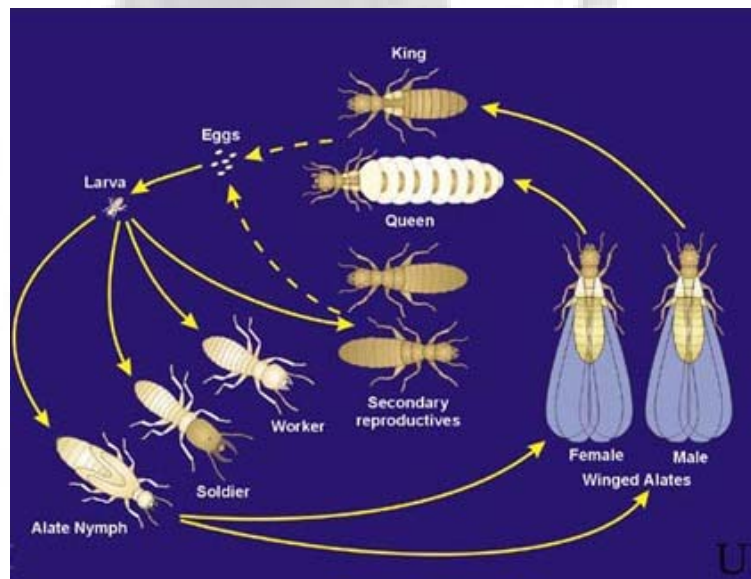
**Bugga da Month:** **Formosan Subterranean Termite**, *Coptotermes formosanus* Shiraki  
[http://entnemdept.ufl.edu/creatures/urban/termites/formosan\\_termite.htm](http://entnemdept.ufl.edu/creatures/urban/termites/formosan_termite.htm)



Small hairs on wings of Swarmers



Soldiers and Workers



Formosan Subterranean Termite Life Cycle

**Critter of the Month:** **St. Andrew's Beach Mouse**, *Peromyscus polionotus peninsularis*  
<http://www.fws.gov/panamacity/beachmice.html>  
<http://myfwc.com/conservation/you- conserve/wildlife/beach-mice/>  
<http://ecos.fws.gov/speciesProfile/profile/speciesProfile.action?sPCODE=A0CB>



St. Andrew's Beach Mouse

**Everybody's Heard About the Bird:** **Burrowing Owl**, *Athene cunicularia*

[http://www.allaboutbirds.org/guide/Burrowing\\_Owl/id](http://www.allaboutbirds.org/guide/Burrowing_Owl/id)

<http://myfwc.com/wildlifehabitats/profiles/birds/owls/burrowing-owl/>



**Burrowing Owl**

**The Sky Tells a Story:** For August 2015, the last quarter moon is on August 7th. The new moon is on August 14th, and will not interfere with the peak of the **Perseid Meteor Shower on the mornings of August 12-13**. From a dark observing site, you can expect about a meteor a minute from 11 PM until dawn, with the radiant Perseus rising in the NE about 11 PM. The **full moon, the Green Corn moon, occurs on August 29th**. **Mercury** is low in the western evening sky at midmonth, with the crescent moon south of it on the 16th. **Venus** and **Jupiter** are both lost in sun's glare, with Venus passing between us and Sun on August 15th, and Jupiter behind the Sun on August 26th. **Mars** is also hard to observe, in the dawn sky rising about an hour before the sun. Only **Saturn** is easy to observe; Saturn lies just west of the claws of Scorpius in the southern evening sky. The brightest star of the northern hemisphere, **Vega** dominates the NE sky. Below Vega are the two bright stars of the **Summer Triangle**; **Deneb** is at the top of the **Northern Cross**, known as **Cygnus the Swan**. To the south is **Altair**, the brightest star of **Aquila the Eagle**.

**Plus the Usual:** **Handouts Gone Wild!!** / **RT Spirit Stick** / **Ticket Drawing** / **Closing**

### **Upcoming Events:**

- 1) **LSD BS Fall "Scouting with a Twist" Camporee, 23-25 Oct.** at Sim's Farm.
- 2) **LSD Annual Scouter Banquet, Sat 9 Jan.**
- 3) **Scouting for Food Bag Drop-off Sat 23 Jan & Food Bag Pickup Sat 30 Jan.**
- 4) **LSD Spring Camporee, 22-24 April 2016.**

**Future Monthly RT Feature Themes:** **If you'd like to Step Up and Become Famous as a LSD RT Theme Presenter, your support would be much appreciated!! Call KG at 234-4077 or email me at [kerry.gunn@navy.mil](mailto:kerry.gunn@navy.mil).** And reminder that all past "Crawlin Kingsnake" RT newsletters and other useful links can be found at [http://www.lakesandsdistrict.org/Boy\\_Scouts.php](http://www.lakesandsdistrict.org/Boy_Scouts.php) .

**10 Sept – Exploring (T.82 Sharon Caldwell)**  
**8 Oct – Special Needs Awareness (T.317 Marsh Weber)**  
**12 Nov –**  
**10 Dec –**  
**14 Jan 2016 – Sales Refresher**  
**11 Feb –**  
**10 Mar –**  
**14 April –**  
**12 May –**

**OTHER RT THEMES – Please Take Your Pick!!** Geocaching, Fitness & Nutrition, Sustainability, Nature & Environment, Cooking, Caving, Archery, Games, Science, Wilderness Survival, Technology, Project Planning, Paddle Sports, Outdoor Ethics, and Mentoring, etc.

**See ya Thursday Night 13 August !!!! YIS, KG, your LSD BS RTC RT #112**

**Roundtable Suggestion / Ideas**

Date: \_\_\_\_\_  
 Name: \_\_\_\_\_ Troop: \_\_\_\_\_  
 Position: \_\_\_\_\_ Phone: \_\_\_\_\_  
 E-mail: \_\_\_\_\_  
 Suggestion / Idea: \_\_\_\_\_  
 \_\_\_\_\_  
 \_\_\_\_\_

